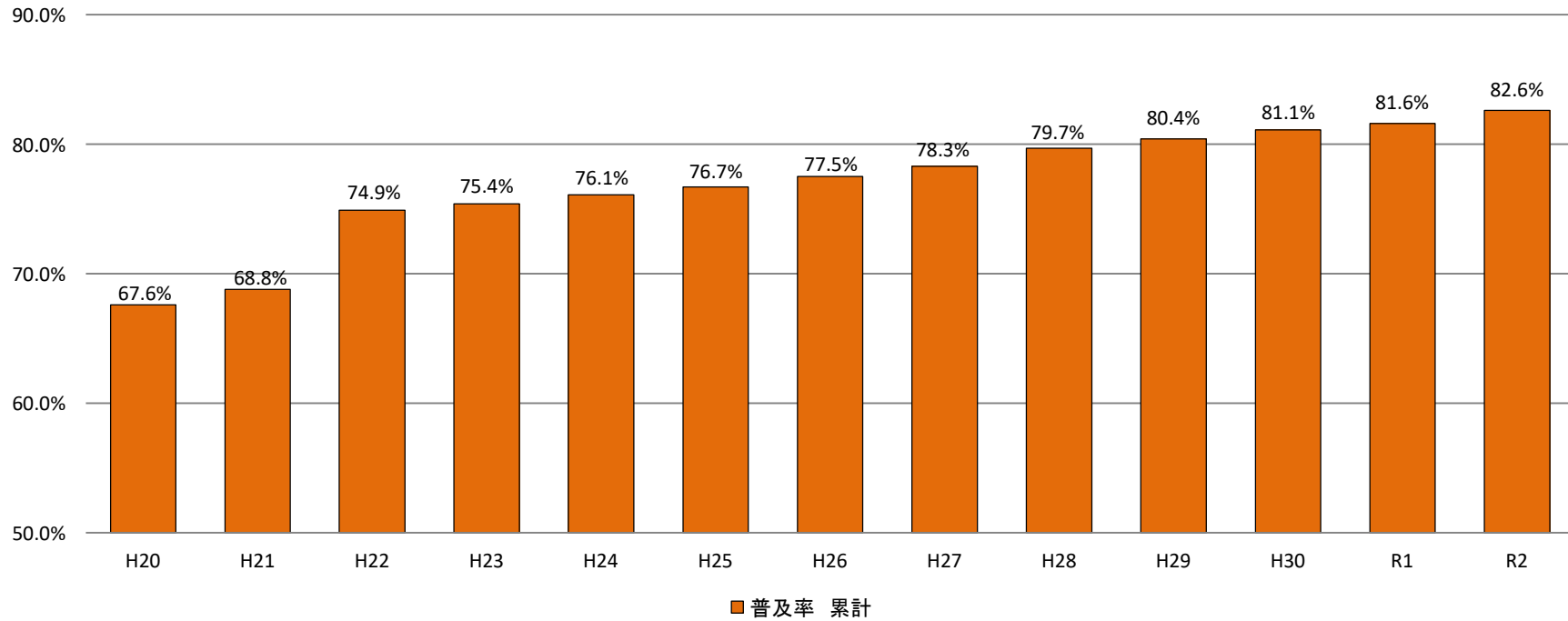


## 普及率推移(熊取町)



普及率	年度	H20	H21	H22	H23	H24	H25	H26	H27	H28	H29	H30	R1	R2
	单年度	1.6%	1.2%	6.1%	0.5%	0.7%	0.6%	0.8%	0.8%	1.4%	0.7%	0.7%	0.5%	1.0%
	累計	67.6%	68.8%	74.9%	75.4%	76.1%	76.7%	77.5%	78.3%	79.7%	80.4%	81.1%	81.6%	82.6%